



SUBSEA KNUCKLE BOOM CRANES

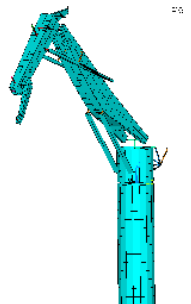


Highlights

- › 50t to 150t capacity range
- › Up to 3500m hook travel
- › Full Active Heave Compensation
- › Low weight and COG
- › Full electric winches and slewing
- › High energy efficiency
- › High accuracy in offer phase
- › Short delivery time
- › Short and trouble free installation and commissioning
- › High up time
- › Condition based maintenance



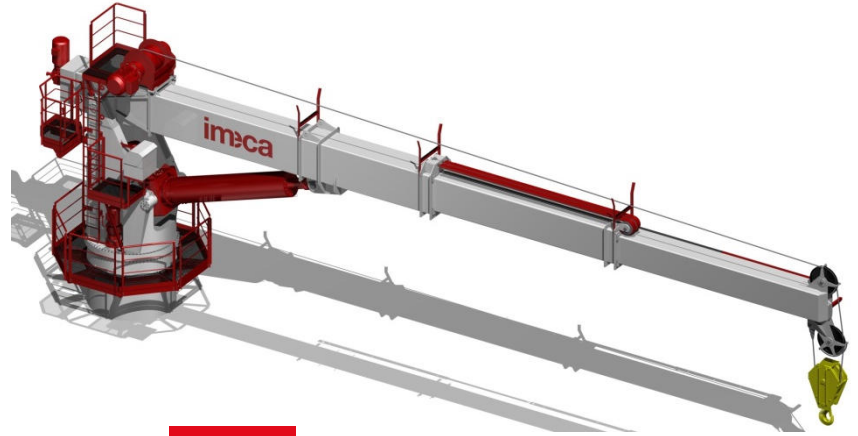
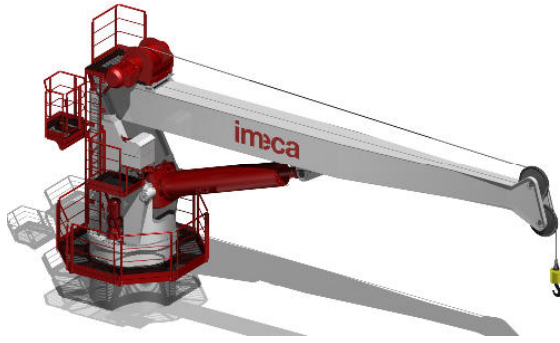
		OKC050	OKC060	OKC070	OKC080	OKC100	OKC150
Max Safe Working Load	Te	50	60	70	80	100	150
Outreach@ max SWL*	m	10	12	13	14	15	18
Outreach max aux hoist	m	30	30	32	32	34	36
Lifting moment	Tm	500	720	910	1120	1500	2700
Total moment	Tm	1250	1600	2000	2500	3200	6300
Pedestal diameter	mm	2500	2800	3100	3600	3600	4000
Max hook travel	[m]	2500	2500	3000	3000	3500	3500



Non contractual data | Contact us for details | REEL © 2016



FIXED & TELESCOPIC BOOM CRANES

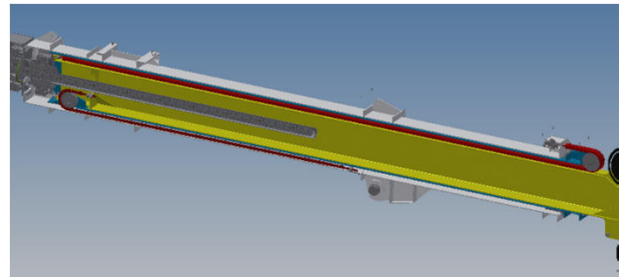


Highlights

- › Full electric drive
- › Low power consumption
- › Turnkey delivery
- › Low weight
- › Environmental friendly
- › Fail safe
- › High efficiency
- › Low temperature resistant

Options

- › Cabin and/or remote control
- › Galvanized or GRP platforms
- › Personnel lift



Telescopic Boom

		DCET 50	DCET 80	DCET 125	DCET 180	DCET 250	DCET 375	DCET 540
Max Safe Working Load	T	5	10	10	15	25	30	30
Outreach @ max SWL*	m	10	8	12	12	10	12	18
Lifting moment	Tm	50	80	125	180	250	375	540
Total moment	Tm	80	130	200	300	400	600	864
Pedestal diameter	mm	1250	1400	1600	1800	2000	2240	2500

Fixed Boom

		DCET 50	DCET 80	DCET 125	DCET 180	DCET 250	DCET 375	DCET 540
Max Safe Working Load	Te	5	10	10	15	25	30	30
Outreach @ max SWL*	m	10	8	12	12	10	12	18
Lifting moment	Tm	50	80	125	180	250	375	540
Total moment	Tm	80	130	200	300	400	600	864
Pedestal diameter	mm	1250	1400	1600	1800	2000	2240	2500

Non contractual data | Contact us for details | REEL © 2016

29/09/2016 Data Sheets rev. A



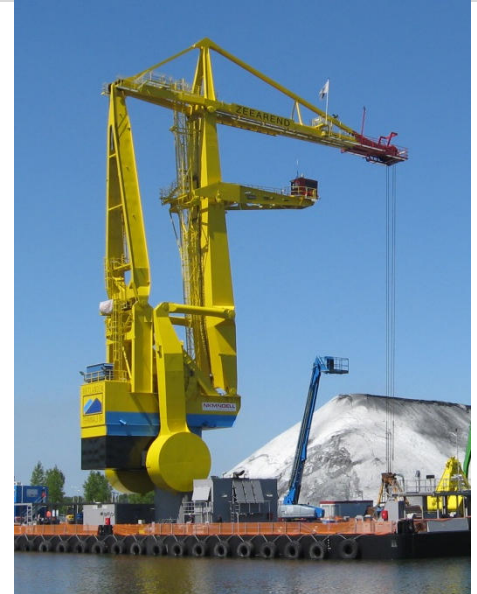
FLOATING CRANES



Highlights lemniscate crane

- › Full electric drive
- › High capacity per hour
- › Easy access to all service parts
- › Durable design; low operational cost
- › Up to 20% improvement in fuel economy achieved by optimized balance, energy buffering and control technology
- › Cabin position ensures optimal overview of the operation
- › Reduced pendulum length

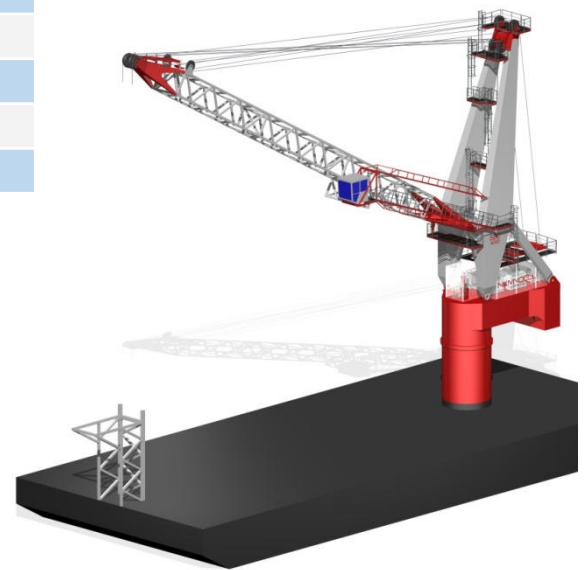
		LC25	LC40	LC50
Max Safe Working Load grab	Te	25	40	50
Max Safe Working Load hook	Te	30	45	55
Max capacity	T/h	1250	2000	2500
Hoisting height about water	m	30	33	36
Outreach	m	12 to 40	13 to 43	15 to 47
Hoisting speed	m/min	150	150	150
Luffing speed	m/min	160	160	160
Slewing	rpm	2	2	2



Highlights single jib crane

- › Full electric drive
- › Good unloading capacity
- › Simpler design; lower cost
- › Easy access to all service parts
- › Durable design; low operational cost
- › Cabin position ensures optimal overview of the operation
- › Good and safe access to cabin, elevator possible
- › Jib can be lowered on boomrest (sea fastening); superior survival

		SJC20	SJC25	SJC40	SJC50
Max Safe Working Load grab	Te	20	25	40	50
Max Safe Working Load hook	Te	25	30	45	55
Max capacity	T/h	850	1100	1800	2250
Hoisting height about water	m	28	36	40	44
Outreach	m	10 to 25	12 to 40	13 to 45	15 to 50
Hoisting speed	m/min	150	150	150	150
Luffing speed	m/min	30	40	45	45
Slewing	rpm	2,1	2	1,8	1,8



Non contractual data | Contact us for details | REEL © 2016